

Safe Labour Migration Project
in Sri Lanka

Pre-Employment Orientation

Supported by SDC
Implemented by district based CBOs

Shabarinath Nair
Regional Advisor
Swiss Agency for Development and Cooperation
Federal Department of Foreign Affairs
Government of Switzerland

SLMP Components/Thematic priorities

INFORMATION

Timely, reliable and accessible safe migration information
(including Pre-Employment Orientation)

PSYCHOSOCIAL SUPPORT

Protection and well-being of the Migrants and their families left behind

ACCESS TO JUSTICE

Legal services & Greivance Management

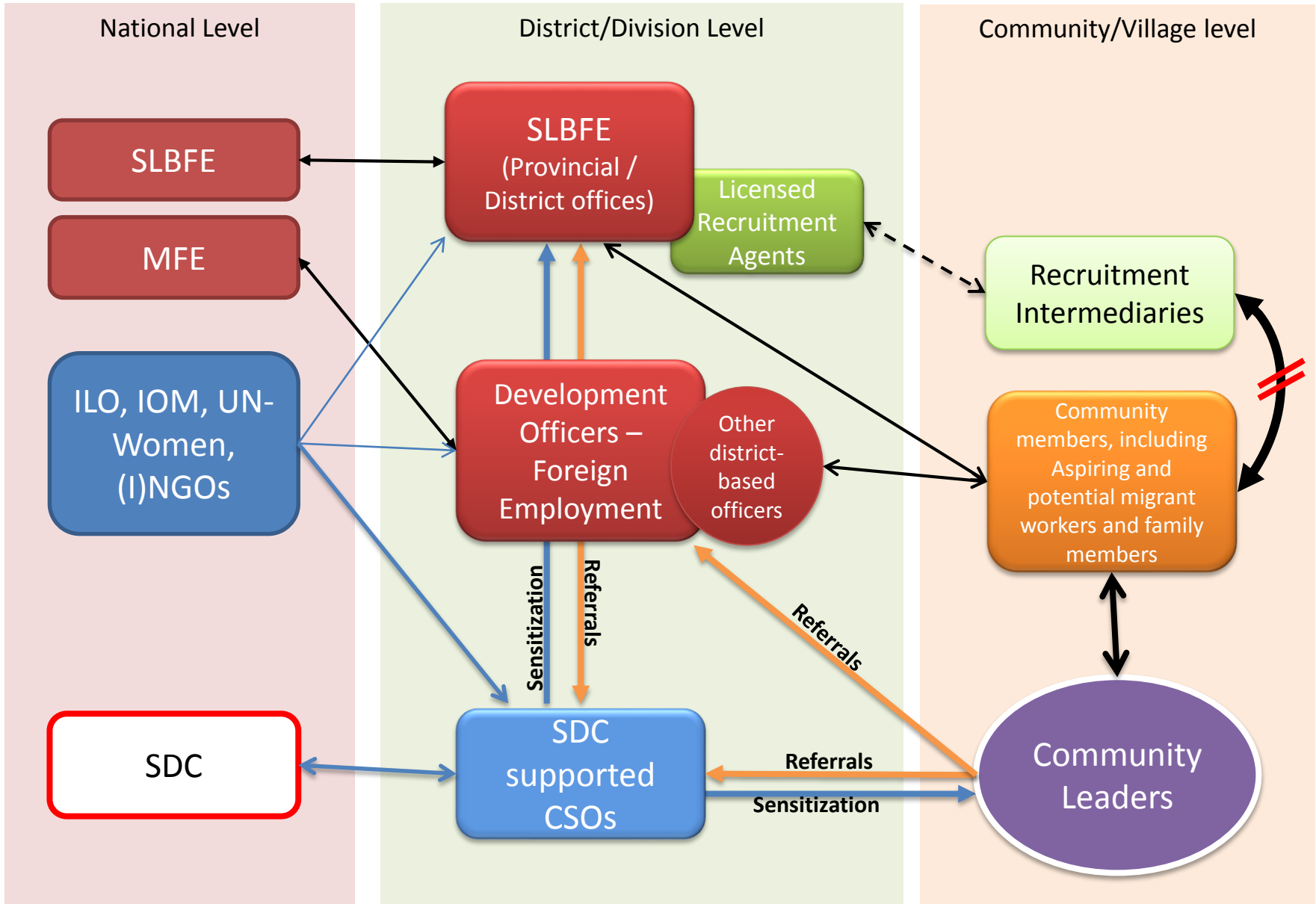
REINTEGRATION SUPPORT

Remittance management, Career guidance & skills development

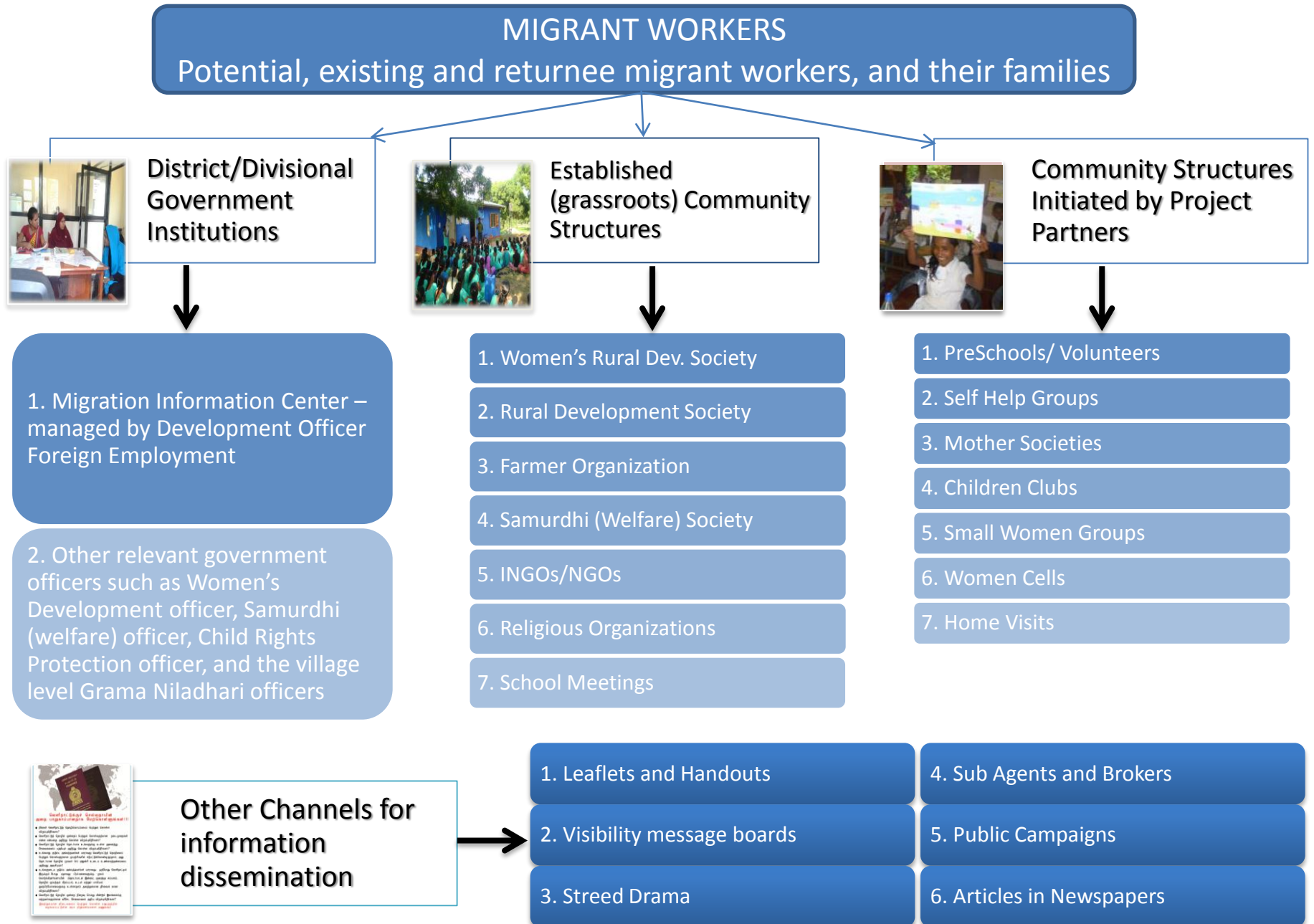
Pre-employment Orientation



PEO Stakeholders Mapping



INFORMATION FLOW AT DISTRICT LEVEL



Information Provided on Each Stage of the Migration Cycle

Pre-Employment

1. Decision making – consider family, alternative employment opportunities, etc
2. Recruitment Process – avoid fraud/exploitation
3. Relevant Government procedures to be followed

Pre-Departure

1. Travelling to airport
2. Procedures to be followed at airport, on flight
3. Preparing family for migration
4. Family care and remittance management plans

Inservice period

1. Reaching COD, and working place
2. Employee roles and responsibilities
3. Staying in touch with family
4. What to do in case of emergency

Return and Reintegration

1. Preparation for returning COO
2. Reintergrating with family and community
3. Sustainable livelihoods



**Small Group Meetings /
Cell Groups Meetings**



**Common Awareness Programme
- Wider Community -**





Training & Sensitization Government Officers

Migration Information Center At Divisional Level



Other Means of Information Sharing – Street Dramas

